

A

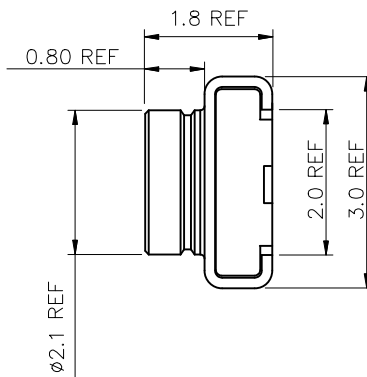
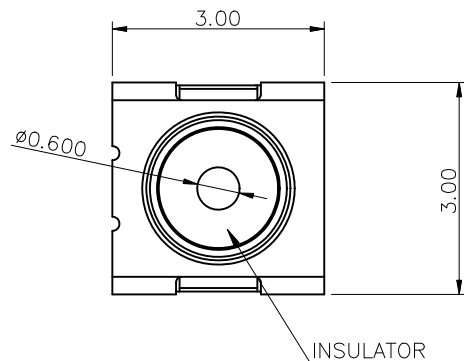
B

C

D

E

1



## 1.MATERIAL:

- 1.1 INSULATOR: LCP, UL94V-0  
INSULATOR COLOR: BLACK
- 1.2 CONTACT A, CONTACT B & OUTER CONTACT: COPPER ALLOY

## 2.FINISH:

- 2.1 CONTACT: GOLD FLASH PLATED OVER  
NICKEL UNDERPLATED OVERALL.

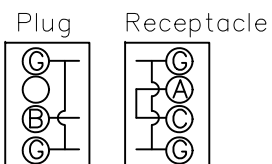
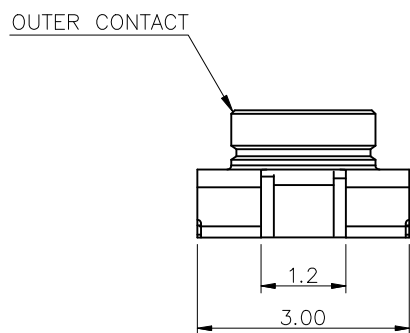
## 3.ELECTRICAL CHARACTERISTICS

- 3.1 IMPEDANCE: 50 OHMS.
- 3.2 RATING POWER: 2.0W.
- 3.3 RATING VOLTAGE: AC 300V.
- 3.4 RATING FREQUENCY: DC~6 GHz
- 3.5 DIELECTRIC WITHSTANDING VOLTAGE: AC 300V PER MINUTE.

## 4.NOTES:

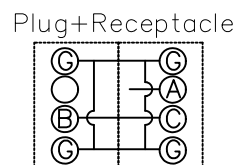
- 4.1 THIS COMPONENT AND ITS HOMOGENEOUS  
SUBCOMPONENTS ARE RoHS COMPLIANT.
- 4.2 RESISTANCE TO SOLDERING HEAT: 265°C FOR 10 SECONDS.

2



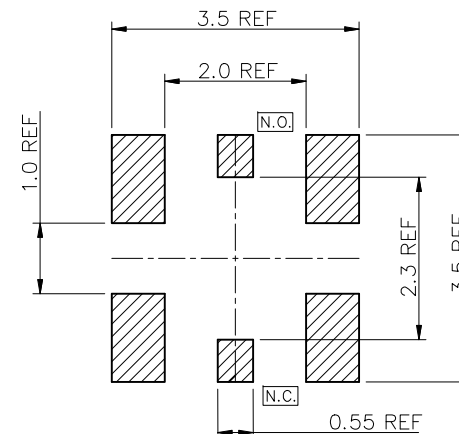
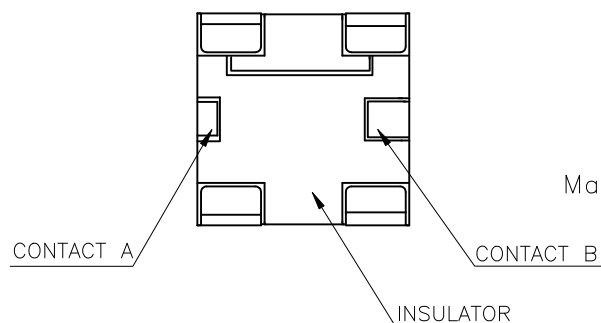
Not mated with the Plug(N.C)

3



Mated with the Plug(N.O)

4



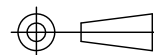
RECOMMENDED PCB LAYOUT(PCB THICKNESS: 1.6mm)  
COMPONENT SIDE VIEW(TOLERANCE: ±0.05)

5

REV.	DESCRIPTION	ECN NO.	NAME	DATE
A	NEW RELEASE		Milo	12Jul2012

REVISIONS

DIM.	TOL.
X	
X.X	±0.30
X.XX	±0.25
X.XXX	±0.15
GENERAL ANGLE:	±3°



TITLE:

RF SWITCH JACK PCB RECEPTACLE

DWG. NO.:

C-RF3052-0713-R

DRAWN:

Milo

PART NO.:

RT-RF3052-0713-R

CHECKED:

Kevin

UNIT:

mm

SCALE:

none

SHEET:

1 OF 1

DWG. SIZE:

A4

LAYER:

APPROVED:

Frank

RFQ NO.:

RT